

An Imperial Capital: Vijayanagara

Question 1.

Krishnadeva Raya belonged to which dynasty?

- (a) Sangam
- (b) Tuluva
- (c) Saluvas
- (d) Aravidu

▼ [Answer](#)

Answer: (b) Tuluva

Question 2.

Which ruler composed the work Amuktamalyada?

- (a) Krishnadeva Raya
- (b) Sultan of Bijapur
- (c) Rama Raya
- (d) Harihara

▼ [Answer](#)

Answer: (a) Krishnadeva Raya

Question 3.

Harihara and Bukka belonged to which dynasty?

- (a) Tuluva
- (b) Saluvas
- (c) Aravidu
- (d) Sangam

▼ [Answer](#)

Answer: (d) Sangam

Question 4.

Which of the following statements is correct regarding Mahanavami Dibba?

- (a) It was a high platform with slots for wooden pillars at a dose and regular intervals.
- (b) It was a massive platform located on one of the highest points in the city.
- (c) It was a place where the king met his advisers.
- (d) All of the above

▼ [Answer](#)

Answer: (b) It was a massive platform located on one of the highest points in the city.



Question 5.

Which Persian ambassador visited the Vijayanagara Empire?

- (a) Domingo Paes
- (b) Nicolo de Conti
- (c) Abdur Razzaq
- (d) Duarte Barbosa

▼ [Answer](#)

Answer: (c) Abdur Razzaq

Question 6.

The Battle of Talikota between Vijayanagara and the Deccan sultans took place in which year?

- (a) 1550
- (b) 1565
- (c) 1570
- (d) 1575

▼ [Answer](#)

Answer: (b) 1565

Question 7.

Which of the following statements is correct regarding the Amara-nayaka system?

- (a) The Amara-nayakas were traders.
- (b) Main features of this system were derived from the mansabdari system.
- (c) Kings had no control over the Amara- nayakas.
- (d) The Amara-nayakas were military commanders who were given territories to govern by the Raya.

▼ [Answer](#)

Answer: (d) The Amara-nayakas were military commanders who were given territories to govern by the Raya.

Question 8.

Consider the following statements regarding the Virupaksha temple.

- (i) The hall in front of the main shrine was built by Krishnadeva Raya to mark his accession.
 - (ii) It has a unique shrine designed as a chariot.
 - (iii) The principal deity of this temple was generally worshipped in Maharashtra.
- (a) only 'i'
 - (b) 'i' and 'iii'
 - (c) 'ii' and 'iii'
 - (d) All of these

▼ [Answer](#)



Answer: (a) only 'i'

Question 9.

Which traveller called the 'Mahanavami Dibba' as the 'House of Victory'?

- (a) Duarte Barbosa
- (b) Fernao Nuniz
- (c) Domingo Paes
- (d) Abdur Razzaq

▼ [Answer](#)

Answer: (c) Domingo Paes

Question 10.

On which of the following occasions was the ceremony performed at Mahanavami Dibba?

- (a) Worship of the state horse
- (b) Marriage of the king
- (c) Victory over the enemy
- (d) All of the above

▼ [Answer](#)

Answer: (a) Worship of the state horse

Question 11.

Where is the Hazara Rama temple situated?

▼ [Answer](#)

Answer: The Hazara Rama temple is situated in the sacred center of Vijayanagara.

Question 12.

Which dynasty did Krishnadeva Raya belong to?

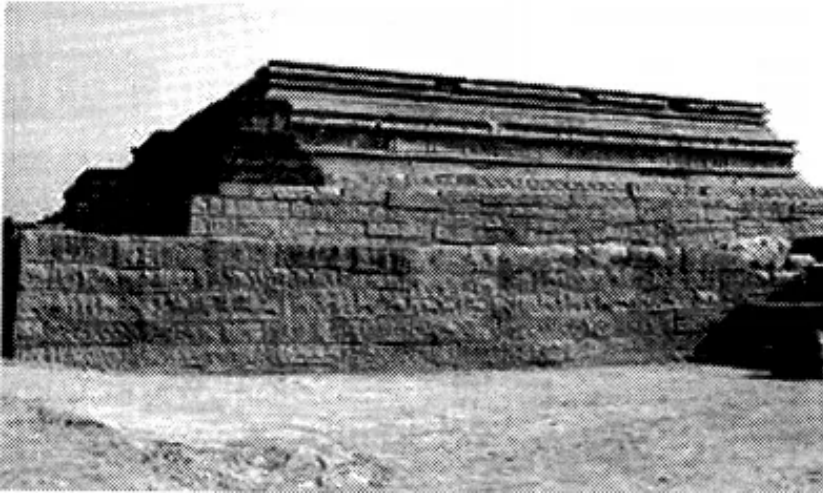
▼ [Answer](#)

Answer: Krishnadeva Raya belonged to the Tuluva dynasty.

Question 13.

Identify the image and write its name.





▼ [Answer](#)

Answer: The Mahanavami Dibba

Question 14.
Identify the image and write its name.



▼ [Answer](#)

Answer: The chariot of the Vitthala temple



Question 15.

The ruins at Hampi were brought to light in 1800 by an engineer and antiquarian named _____

▼ [Answer](#)

Answer: Colonel Colin Mackenzie

Question 16.

Krishnadeva Raya, the most famous ruler of Vijayanagara, composed a work on statecraft in Telugu known as the _____

▼ [Answer](#)

Answer: Amuktamalyada

Question 17.

Arrange the following dynasties of the Vijayanagara Empire in chronological order:

1. Sangama
2. Aravidu
3. Tuluva
4. Saluva

Choose the correct option:

- (a) 1, 3, 4 and 2
- (b) 2, 1, 3 and 4
- (c) 1, 4, 3 and 2
- (d) 4, 1, 2 and 3

▼ [Answer](#)

Answer: (c) 1, 4, 3 and 2

Question 18.

Read the information given below:

Identify and name this system.

This system was a major political innovation of the Vijayanagara Empire. It is likely that many features of this system were derived from the iqta system of the Delhi Sultanate.

▼ [Answer](#)

Answer: Amara-nayaka system

Question 19.

Match the following.



(i) Abdur Razzaq	(a) Persia
(ii) Afanasii Nikitin	(b) England
(iii) Fernao Nuniz	(c) Russia
(iv) Colonel Colin Mackenzie	(d) Portugal

Choose the correct option

- (a) i – a, ii – d, iii – b, iv – c
- (b) i – c, ii – a, iii – b, iv – d
- (c) i – a, ii – c, iii – d, iv – b
- (d) i – d, ii – a, iii – b, iv – c

▼ [Answer](#)

Answer: (c) i – a, ii – c, iii – d, iv – b

Question 20.

Consider the following statements regarding the rule of Krishnadeva Raya.

- (i) Krishnadeva Raya belonged to the Tuluva dynasty.
- (ii) He acquired the land between the Tungabhadra and Krishna rivers and subdued the rulers of Orissa and defeated the Sultan of Bijapur.
- (iii) The hall in front of the main shrine of the Vitthala temple was built by Krishnadeva Raya.

Which of the following statements is/are correct?

- (a) I and II
- (b) II and III
- (c) I and III
- (d) II only

▼ [Answer](#)

Answer: (a) I and II

Question 21.

Given below are two statements, one labelled as Assertion (A) and the other labelled as Reason (R):

Assertion (A): The rayas gave territories to military commanders.

Reason (R): The Amar-nayaka system was a major political innovation of the Mughal Empire.

- (a) Both (A) and (R) are correct and (R) is the correct explanation of (A).
- (b) Both (A) and (R) are correct and (R) is not the correct explanation of (A).
- (c) (A) is correct but (R) is not correct.
- (d) (R) is correct but (A) is not correct.

▼ [Answer](#)



Answer: (c) (A) is correct but (R) is not correct.

Question 22.

Who founded the Vijayanagara Empire?

▼ [Answer](#)

Answer: Two brothers Harihara and Bukka laid the foundation of Vijayanagara Empire in 1336.

